

How accurate (and usable) is GDEM?

(A statistical assessment of GDEM using
LiDAR data)

Tomislav Hengl & Hannes I. Reuter

ISRIC — World Soil Information, Wageningen University






- ▶ Global 30 m DEM created by stereo-correlating the **1.3 million-scene ASTER archive of optical images**;
- ▶ Produced jointly by **METI (Japan) and NASA**;
- ▶ Covering almost **98% of Earth's land surface**;
- ▶ Version 1 publicly released on **June 29th 2009**;



¹<http://www.gdem.aster.ersdac.or.jp>

How to assess accuracy
of a gridded elevation product (DEM)?
(which aspects to look at?
how to test them?)

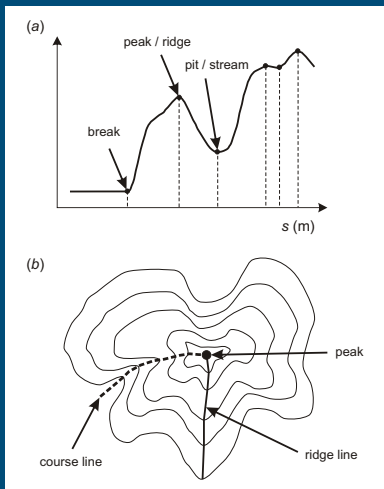
Connected work I

-  Guth, P.L., 2010. *“Geomorphometric comparison of ASTER DEM and SRTM”*. Join Symposium of ISPRS Technical Commission IV, Orlando, FL, p. 10.
-  Hayakawa, Y.S., T. Oguchi and Z. Lin. 2008. *“Comparison of new and existing global digital elevation models: ASTER G-DEM and SRTM-3”*. Geophys. Res. Lett., 35(17), L17404.
-  Hirt, C., Filmer, M.S., Featherstone, W.E., 2010. *“Comparison and validation of the recent freely available ASTER-GDEM ver1, SRTM ver4.1 and GEODATA DEM-9S ver3 digital elevation models over Australia”*. Australian Journal of Earth Sciences, 57(3): 337–347.

Connected work II

-  Reuter, H.I. and Nelson, A. and Strobl, P. and Mehl, W. and Jarvis, A. 2009. *“A first assessment of Aster GDEM tiles for absolute accuracy, relative accuracy and terrain parameters”*. Geoscience and Remote Sensing Symposium, 2009 IEEE International, IGARSS 2009, Vol 5., p. 240.
-  Toutin, T. 2008. *“ASTER DEMs for geomatic and geoscientific applications: a review”*. Int. J. Remote Sens., 29(7), 1855–1875.

Land surface elements



Land surface smoothness

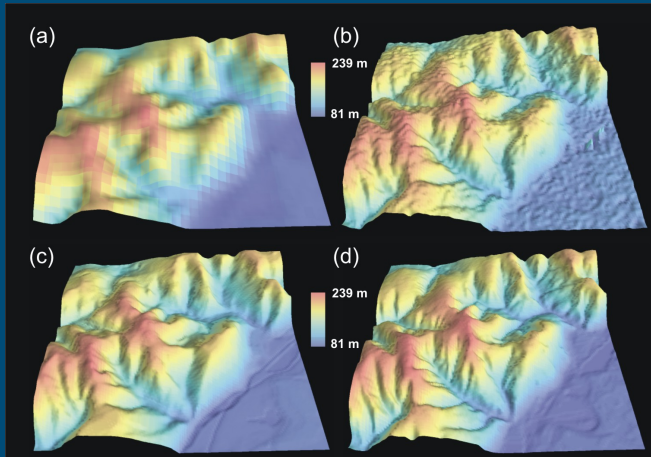
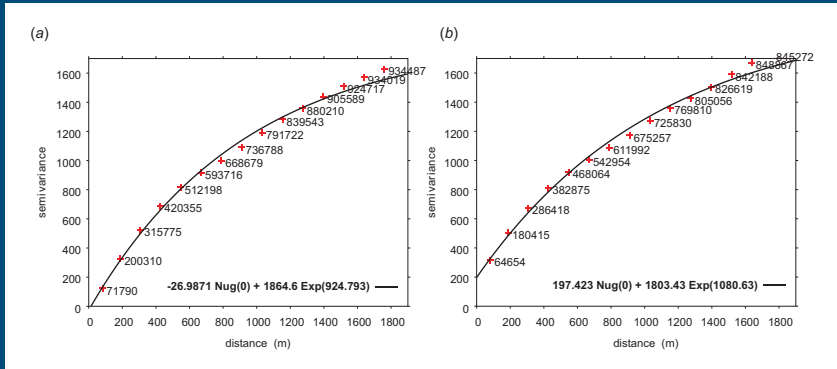


Figure: (a) 90 m resolution SRTM DEM, (b) 30 m resolution SRTM DEM, (c) 1:50,000 topo-map, and (d) 1:5000 topo-map.

Variogram comparison



The referent LSM
can be produced using significantly
more accurate measurements
(e.g. upscaled LiDAR measurements)

Statistical framework

Proposed framework for assessment of DEM accuracy:

- ▶ **Accuracy of absolute elevations** (absolute error);

Statistical framework

Proposed framework for assessment of DEM accuracy:

- ▶ **Accuracy of absolute elevations** (absolute error);
- ▶ **Positional and attribute accuracy of hydrological features** (streams, watersheds, landforms etc);

Statistical framework

Proposed framework for assessment of DEM accuracy:

- ▶ **Accuracy of absolute elevations** (absolute error);
- ▶ **Positional and attribute accuracy of hydrological features** (streams, watersheds, landforms etc);
- ▶ **Accuracy of surface roughness** (i.e. representation of the short-range variation);

Statistical framework

Proposed framework for assessment of DEM accuracy:

- ▶ **Accuracy of absolute elevations** (absolute error);
- ▶ **Positional and attribute accuracy of hydrological features** (streams, watersheds, landforms etc);
- ▶ **Accuracy of surface roughness** (i.e. representation of the short-range variation);
- ▶ User's satisfaction;

Absolute accuracy

Absolute error of a DEM is commonly derived as:

$$RMSE = \sqrt{\frac{\sum_{i=1}^N (z^{GDEM} - z)^2}{N - 1}} \quad (1)$$

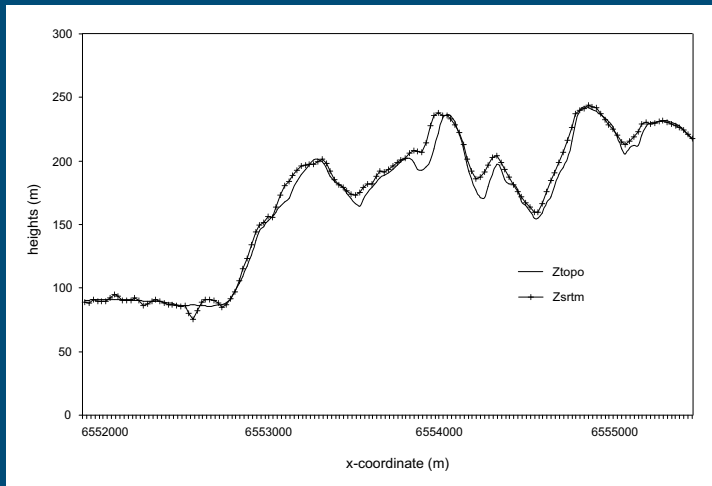
Target elevation can also be modeled as a function of the true elevation:

$$z^{GDEM} = f(z) \quad (2)$$

R-square indicates how much of variability in true elevations (total sum of squares — SSTO) can be explained by the target DEM (residual sum of squares — SSE):

$$R^2 = 1 - \frac{SSE}{SSTO} \quad (3)$$

Comparing elevations



Hydrological features

Spatial accuracy of stream networks can be assessed by comparing the buffer distance maps for stream networks derived using the same settings but different DEMs as inputs.

As with absolute elevations, the accuracy can be evaluated by fitting a regression model and then looking at R-square values and statistical significance for buffer distance maps.

Surface roughness

Surface roughness is the local variation of values in a search radius. There are many ideas on how to derive this parameter. Here, we have decided to evaluate surface roughness using two standard measures:

1. **Difference in the variogram parameters** — especially in the range and nugget parameters — fitted using (randomly) sampled elevation data. This is a global measure.
2. **Difference in the local variance** derived using a 7×7 search-window. This is a local measure.

Case studies

Four small case studies in areas of variable relief and forest canopy:

- ▶ Booschord (Netherlands),
- ▶ Calabria (Italy),
- ▶ Fishcamp (USA),
- ▶ Zlatibor (Serbia),

For each case study we have prepared a 30 m LiDAR DEM and GDEM.

Software used

All processing has been implemented in the R+SAGA/FWTools framework:

- ▶ **R > v2.12** including a list of packages;
- ▶ **Tinn-R v2.3** (code editor);
- ▶ **SAGA GIS v2.0.7** — a light GIS (not available under Mac OS!);
- ▶ **FWTools v2.4** — a list of utilities to handle spatial data; GRASS GIS v6.4.

The R script can be obtained at

<http://geomorphometry.org/content/gdem-assessment>

Example

```
> library(maptools); library(gstat); library(rgdal)
> # Download the datasets:
> data.url <- "http://geomorphometry.org/system/files/GDEM_assessment.zip"
> download.file(data.url, destfile="GDEM_assessment.zip")
> unzip("GDEM_assessment.zip")
...
> str(grid.list[[j]]@data)

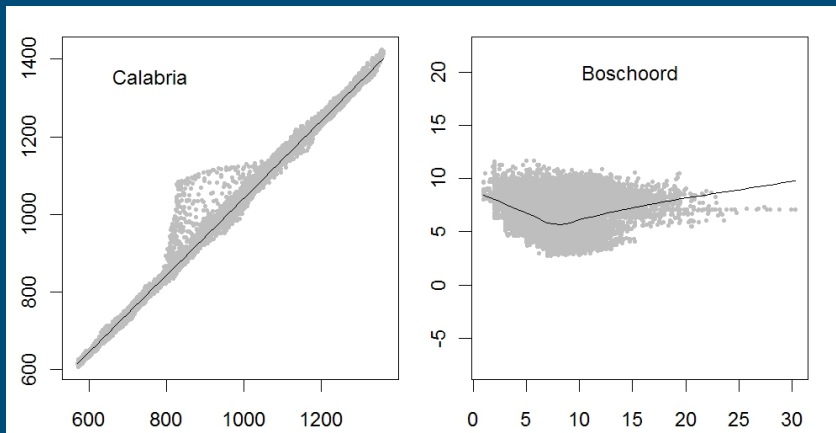
'data.frame':  15000 obs. of  2 variables:
 $ zlatibor_LDEM: num  1010 1010 1008 1007 1005 ...
 $ zlatibor_GDEM: num  997 1000 1000 1000 998 ...
```

Results: accuracy

Results of regression modeling (st.dev., R-square, RMSE):

- ▶ **Booschord:** 1.6 m, 0.01, 3.3 m
- ▶ **Calabria:** 171.3 m, .9941, 45.9 m
- ▶ **Fishcamp:** 111.1 m, .9915, 16.6 m
- ▶ **Zlatibor:** 37.7 m, .9656, 8.9 m

Elevations



Stream networks

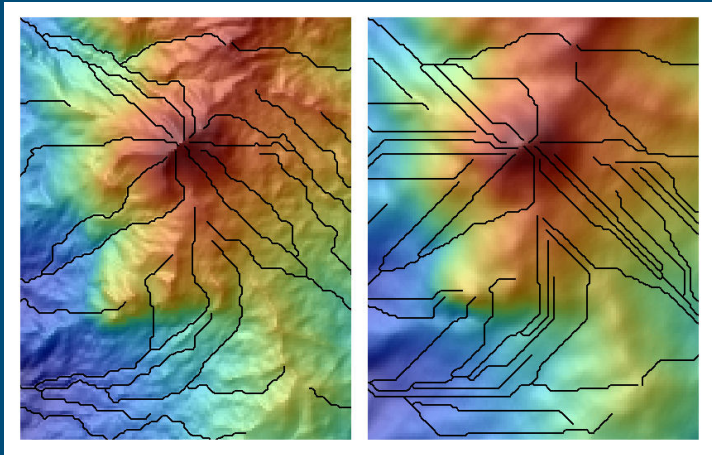


Figure: Calabria data set (left: LiDAR; right: GDEM).

STDEV (Calabria)

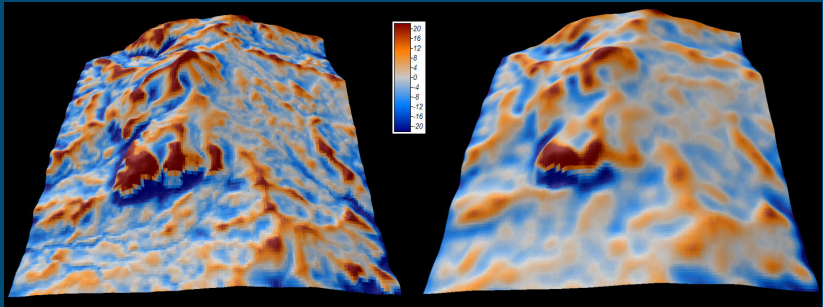


Figure: Standard deviation (surface roughness) derived using a 7 by 7 search window in SAGA GIS.

Variogram comparison (Calabria)

```
> vgm_LDEM.list[[2]]
```

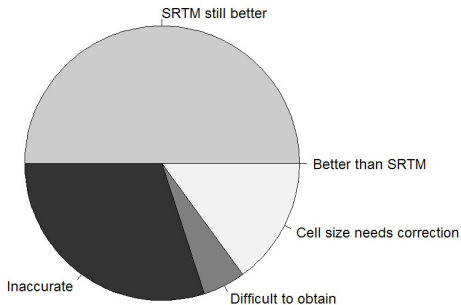
	model	psill	range	kappa
1	Nug	75.14568	0.000	0.0
2	Mat	150391.85522	2624.796	1.2

```
> vgm_GDEM.list[[2]]
```

	model	psill	range	kappa
1	Nug	18.55683	0.000	0.0
2	Mat	199978.44320	3184.624	1.2

What do people think

GDEM usability on april 19 2011 (N=20)



Conclusions

- ▶ An adjusted R-square of $>.995$ could be used as the threshold level for a satisfactory fit between LiDAR and GDEM (this R-square corresponds to RMSE of <10 m in an area of medium relief e.g. with st.dev. in elevations of about 50–100 m).

Conclusions

- ▶ An adjusted R-square of $>.995$ could be used as the threshold level for a satisfactory fit between LiDAR and GDEM (this R-square corresponds to RMSE of <10 m in an area of medium relief e.g. with st.dev. in elevations of about 50–100 m).
- ▶ GDEM is of little use in areas of low relief ($sd < 20$ m).

Conclusions

- ▶ An adjusted R-square of $>.995$ could be used as the threshold level for a satisfactory fit between LiDAR and GDEM (this R-square corresponds to RMSE of <10 m in an area of medium relief e.g. with st.dev. in elevations of about 50–100 m).
- ▶ GDEM is of little use in areas of low relief ($sd < 20$ m).
- ▶ The effective resolution of GDEM is possibly 2-3 times coarser than the nominal resolution of 30 m.

Conclusions

- ▶ An adjusted R-square of $>.995$ could be used as the threshold level for a satisfactory fit between LiDAR and GDEM (this R-square corresponds to RMSE of <10 m in an area of medium relief e.g. with st.dev. in elevations of about 50–100 m).
- ▶ GDEM is of little use in areas of low relief ($sd < 20$ m).
- ▶ The effective resolution of GDEM is possibly 2-3 times coarser than the nominal resolution of 30 m.
- ▶ By visually comparing DEMs for the four case studies, one can notice that GDEM often carries some artificial lines and ghost-like features.

Conclusions

- ▶ An adjusted R-square of $>.995$ could be used as the threshold level for a satisfactory fit between LiDAR and GDEM (this R-square corresponds to RMSE of <10 m in an area of medium relief e.g. with st.dev. in elevations of about 50–100 m).
- ▶ GDEM is of little use in areas of low relief ($sd < 20$ m).
- ▶ The effective resolution of GDEM is possibly 2-3 times coarser than the nominal resolution of 30 m.
- ▶ By visually comparing DEMs for the four case studies, one can notice that GDEM often carries some artificial lines and ghost-like features.
- ▶ Analysis of the short-range variability helps determine effective grid cell size that more closely matches the true surface roughness.

Goodby GDEM, good morning TanDEM-X

